



Easy CAD to SVG Converter

© 2011 Benzsoft

Note:

To change the product logo for your own print manual or PDF, click "Tools > Manual Designer" and modify the print manual template.

Title page 1

Use this page to introduce the product

by Benzsoft Corporation

This is "Title Page 1" - you may use this page to introduce your product, show title, author, copyright, company logos, etc.

This page intentionally starts on an odd page, so that it is on the right half of an open book from the readers point of view. This is the reason why the previous page was blank (the previous page is the back side of the cover)

Easy CAD to SVG Converter

© 2011 Benzsoft

All rights reserved. No parts of this work may be reproduced in any form or by any means - graphic, electronic, or mechanical, including photocopying, recording, taping, or information storage and retrieval systems - without the written permission of the publisher.

Products that are referred to in this document may be either trademarks and/or registered trademarks of the respective owners. The publisher and the author make no claim to these trademarks.

While every precaution has been taken in the preparation of this document, the publisher and the author assume no responsibility for errors or omissions, or for damages resulting from the use of information contained in this document or from the use of programs and source code that may accompany it. In no event shall the publisher and the author be liable for any loss of profit or any other commercial damage caused or alleged to have been caused directly or indirectly by this document.

Printed: December 2011 in (wherever you are located)

Publisher

...enter name...

Managing Editor

...enter name...

Technical Editors

...enter name...

...enter name...

Cover Designer

...enter name...

Team Coordinator

...enter name...

Production

...enter name...

Special thanks to:

All the people who contributed to this document, to mum and dad and grandpa, to my sisters and brothers and mothers in law, to our secretary Kathrin, to the graphic artist who created this great product logo on the cover page (sorry, don't remember your name at the moment but you did a great work), to the pizza service down the street (your daily Capricciosas saved our lives), to the copy shop where this document will be duplicated, and and and...

Last not least, we want to thank EC Software who wrote this great help tool called HELP & MANUAL which printed this document.

Table of Contents

| | |
|--|-----------|
| Foreword | 5 |
| Part I Introduction | 7 |
| 1 Understand Easy CAD to SVG Converter Capabilities..... | 7 |
| 2 Understand the Interface..... | 8 |
| 3 Check System Requirement..... | 10 |
| 4 Understand the Concept of Shareware..... | 11 |
| Part II Work with Conversion | 15 |
| 1 Choose Conversion Mode..... | 15 |
| 2 Add Drawings to Conversion List..... | 16 |
| 3 Remove Drawings from Conversion List..... | 17 |
| 4 Set up Conversion Options..... | 18 |
| 5 Specify Output Folder..... | 20 |
| Part III Purchase and Registration | 23 |
| 1 Limitation in Evaluation Copy..... | 23 |
| 2 Benefits of Purchase..... | 24 |
| 3 How to Purchase..... | 25 |
| 4 How to Register..... | 25 |
| Part IV Trademarks | 28 |
| Index | 0 |

Foreword

This is just another title page
placed between table of contents
and topics

Top Level Intro

This page is printed before a new
top-level chapter starts

Part



1 Introduction

Introduction to Easy CAD to SVG Converter

Benzsoft is proud to announce the release of the Easy CAD to SVG Converter software, which enables you to convert your CAD drawings to SVG (Scalable Vector Graphics) formats without the need for AutoCAD-based products. Easy CAD to SVG Converter supports conversion from DWG, DXF, DWF to SVG file types. Easy CAD to SVG Converter is more than a file format converter, and you can even batch render your DWG, DXF, DWF drawing files to SVG files of any size to answer your specific needs.

Topics in this section

- [Understand Easy CAD to SVG Converter Capabilities](#)

Easy CAD to SVG Converter is a power conversion software for converting any DXF, DWG, or DWF to SVG.

- [Understand the Interface](#)

Easy CAD to SVG Converter is easy-to-use, and you don't need any special knowledge nor background to start.

- [Check System Requirement](#)

This section informs you the minimum software and hardware requirement to run the software smoothly.

- [Understand the Concept of Shareware](#)

Try-before-you-buy allows you to test-drive Easy CAD to SVG Converter in 15 days.

1.1 Understand Easy CAD to SVG Converter Capabilities

Understand Easy CAD to SVG Converter Capabilities

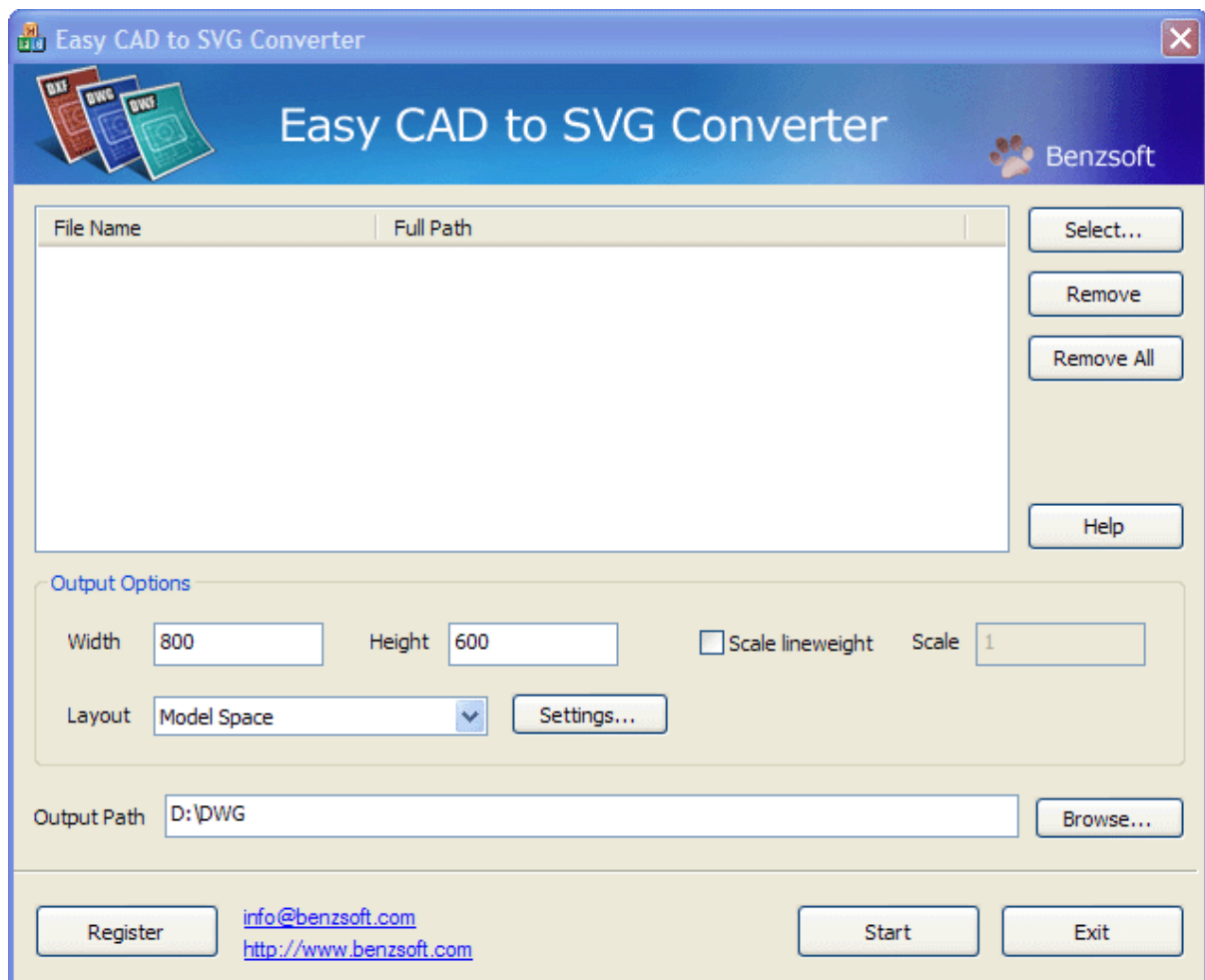
With Easy CAD to SVG Converter, you have direct access to DWG, DXF, DWF drawing files created by AutoCAD-based applications for the following purposes:

- Convert DXF, DWG, DWF drawings to Scalable Vector Graphics in SVG format.
- Batch conversion from multiple drawing files to SVG files.
- Automatically search for drawing files in the folder of your choice including subfolders.
- An editable file list collects drawing files from multiple locations.
- Choose layout and layers for conversion.
- Customize export area and line weight.
- Specify output image height, width, DPI, and background color.
- Grayscale output image files.
- Load SHX fonts and XRef blocks if needed.
- Support DWG, DXF, DWF files forward and backward with versions as early as AutoCAD Release 9 and as recent as AutoCAD 2012.

1.2 Understand the Interface

Understand the Interface

Easy CAD to SVG Converter is easy-to-use. Your primary interface for controlling the operation of Easy CAD to SVG Converter are the buttons, which include the most common operations.



Select...

Add one or more CAD drawing files to the Conversion List. Multiple drawing files can be selected by pressing the Shift key or Alt key on your keyboard.

Remove

Remove the selected drawing file from the Conversion List.

Remove All

Remove all drawing files from the Conversion List.

Output Options

Specify the output width and height for the SVG. Specify the layout and lineweight.

Output Path

Indicate where the output SVG files are to be saved.

Help

Get this help.

Exit

Quit Easy CAD to SVG Converter

Register

Register Easy CAD to SVG Converter online or purchase a license for Easy CAD to SVG Converter and get the registration code to unlock all the blocked features in Easy CAD to SVG Converter.

1.3 Check System Requirement

Check System Requirement

Before you install Easy CAD to SVG Converter, make sure that your computer meets the minimum hardware and software requirements.

Software Requirements

Operating system 32-bit or 64-bit

Microsoft® Windows® XP Home and Professional

Microsoft Windows Vista® including:

Windows Vista Enterprise

Windows Vista Business

Windows Vista Ultimate

Windows Vista Home

Microsoft Windows 2000®

Microsoft Windows Media Center Edition®

Microsoft Windows Home Server®

Microsoft Windows Server 2003®

Microsoft Windows Server 2008®

Microsoft Windows 7®

Microsoft Windows 8®

Hardware Requirements

Processor 32-bit or 64-bit Intel® Pentium® 4 processor or AMD® Athlon,

Graphics card 1024 x 768 VGA with True Color

Requires a Windows-supported display adapter.

Hard Disk 25 MB

Pointing device Mouse, trackball, or other device

Optional hardware Printer or plotter

Modem or access to an Internet connection

Network interface card

1.4 Understand the Concept of Shareware

Understand the Concept of Shareware

The term shareware refers to proprietary software that is provided to users without payment on a trial basis and is often limited by any combination of functionality, availability or convenience. Shareware is often offered as a download from an Internet website or as a compact disc included with a periodical such as a newspaper or magazine. The aim of shareware is to give buyers the opportunity to use the program and judge its usefulness before purchasing a license for the full version of the software.

Shareware is usually offered as a trial version with certain features only available after the license is purchased, or as a full version, but for a trial period. Once the trial period has passed the program may stop running until a license is purchased. Shareware is often offered without support, updates, or help menus, which only become available with the purchase of a license. The words "free trial" or "trial version" are indicative of shareware.

The term shareware is used in contrast to retail software, which refers to commercial

software available only with the purchase of a license which may not be copied for others, public domain software, which refers to software not copyright protected, and freeware, which refers to copyrighted software for which the author solicits no payment (though he or she may request donations).

Easy CAD to SVG Converter is Shareware

Easy CAD to SVG Converter is shareware, and you can evaluate it for up to 15 days. When the evaluation is over, you are opt to buy the full version of Easy CAD to SVG Converter or remove it from your computer.

The full version of Easy CAD to SVG Converter can be obtained online after you pay the registration fee and get a license from one of our resellers worldwide. For more information on registration, read the How to Purchase section.

The benefits of registration and obtaining the full version include, but not limited to,

- Only a one-time charge for a lifetime license
- 100% Safe and Secure Transaction (128 bit SSL)
- Life-time unlimited software upgrade
- Get unlimited premium technical support by email and by phone
- Batch conversion limitation completely removed
- No more Registration Reminder window
- Recovery Protection: download full version software at anytime!
- Electronic Delivery (immediate download, instant setup)
- Get 20% off when you purchase another product produced by Benzsoft

Product Removal

For users who are not satisfied with Easy CAD to SVG Converter and wish to uninstall it completely from their computers,

[Windows 2000/XP/2003/MCE]

On the Start menu (Windows), click Settings Control Panel Add or Remove Programs.

Select Easy CAD to SVG Converter. Click Change/Remove.

On the Installation wizard Maintenance Mode page, click Uninstall.

On the Uninstall Easy CAD to SVG Converter page, click Next.

Click Finish.

[Windows 8/7/Vista/2008/2012]

On the Start menu (Windows), click Settings Control Panel Uninstall a Program.

Select Easy CAD to SVG Converter. Click Uninstall/Change.

If the User Account Control dialog box displays, click Continue.

On the Installation wizard Maintenance Mode page, click Uninstall.

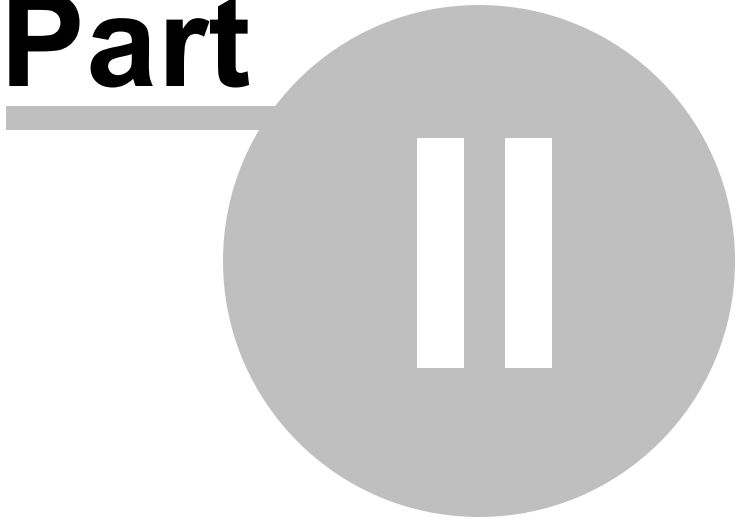
On the Uninstall Easy CAD to SVG Converter page, click Next.

Click Finish.

Top Level Intro

This page is printed before a new
top-level chapter starts

Part



2 Work with Conversion

Work with Conversion

Easy CAD to SVG Converter helps you have your conversion done quickly and easily. You can convert a single drawing file or multiple drawing files by following the steps given below.

Topics in this section

- [Choose Conversion Mode](#)

You can choose to convert a single drawing or multiple drawings.

- [Add Drawings to Conversion List](#)

Add your drawing to the conversion list or add your drawings from different sources to the conversion list.

- [Remove Drawings from Conversion List](#)

Remove one or more drawings from the Conversion List.

- [Set up Conversion Options](#)

You decide the dimension of the SVG files, the line width used, and the layout.

- [Specify Output Folder](#)

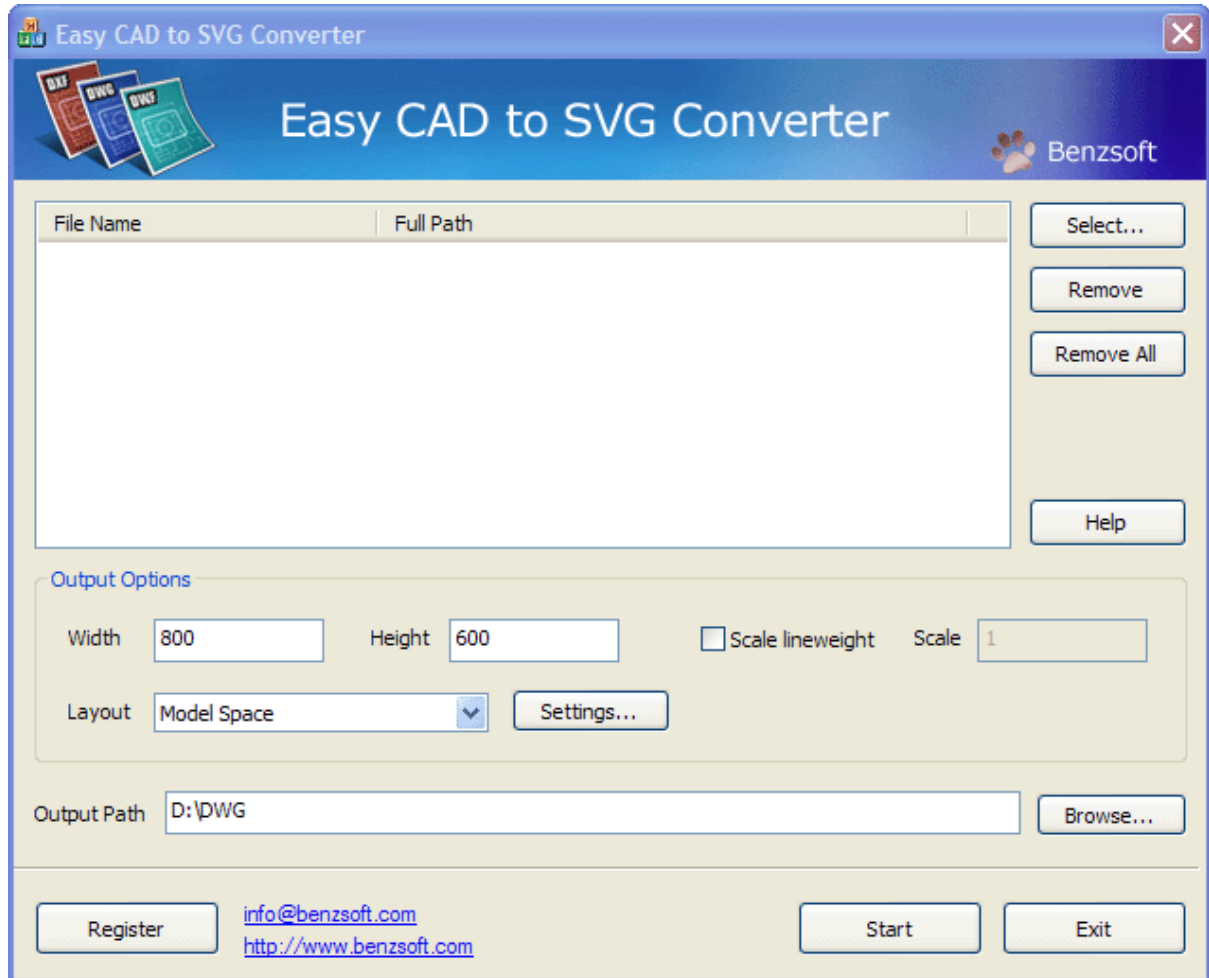
Specify where to save the output drawing files.

2.1 Choose Conversion Mode

Choose Conversion Mode

Two conversion options are available, which correspond to,

1. Single file conversion mode
2. Multiple files conversion mode (a.k.a batch conversion mode, bulk conversion mode)



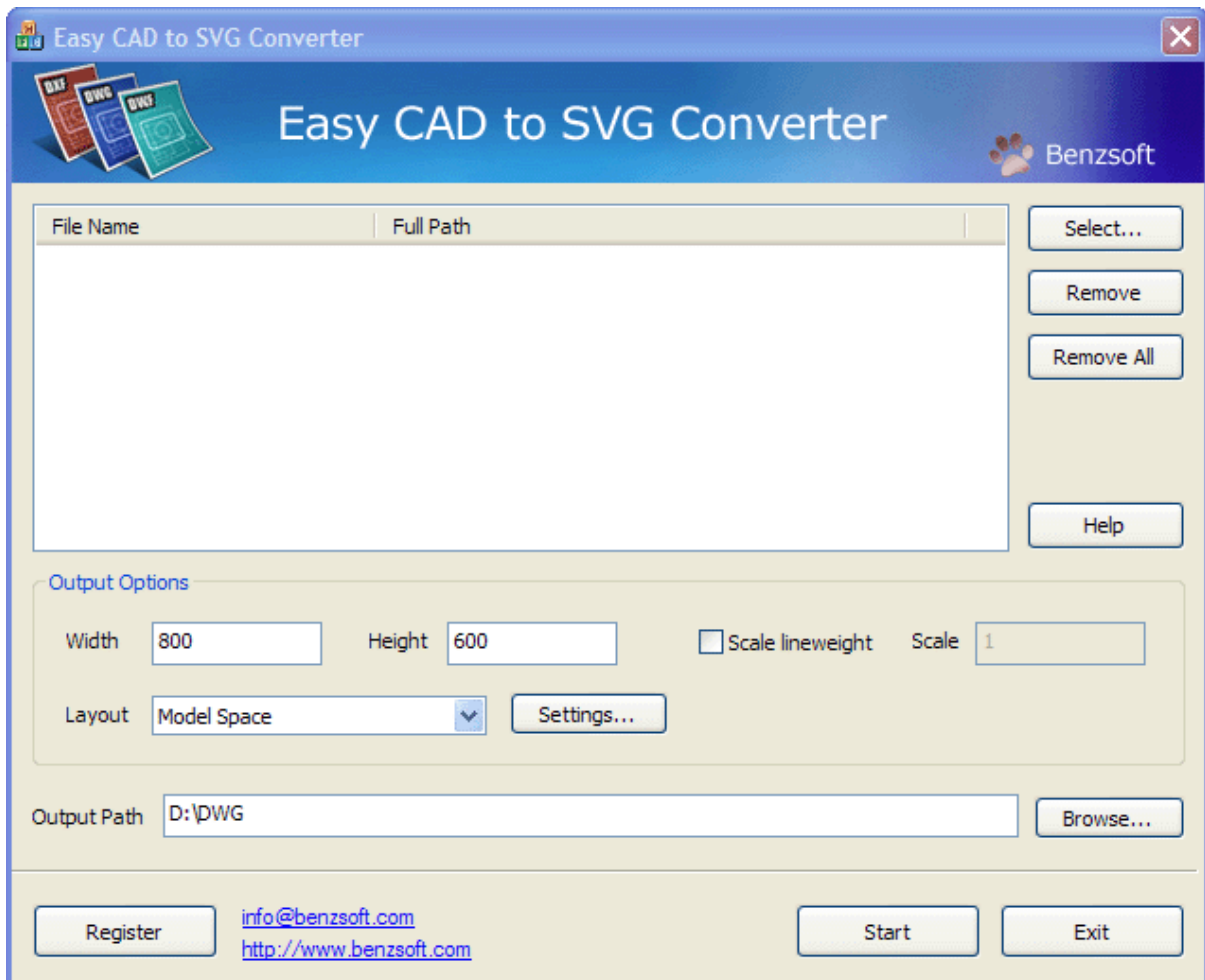
When you click "Select..." button, you will be able to select one or more CAD files. CAD files can be of DWG, DXF, DWF file types.

2.2 Add Drawings to Conversion List

Add Drawings to Conversion List

You can add one or more drawing files from any folder by clicking *Select...* button.

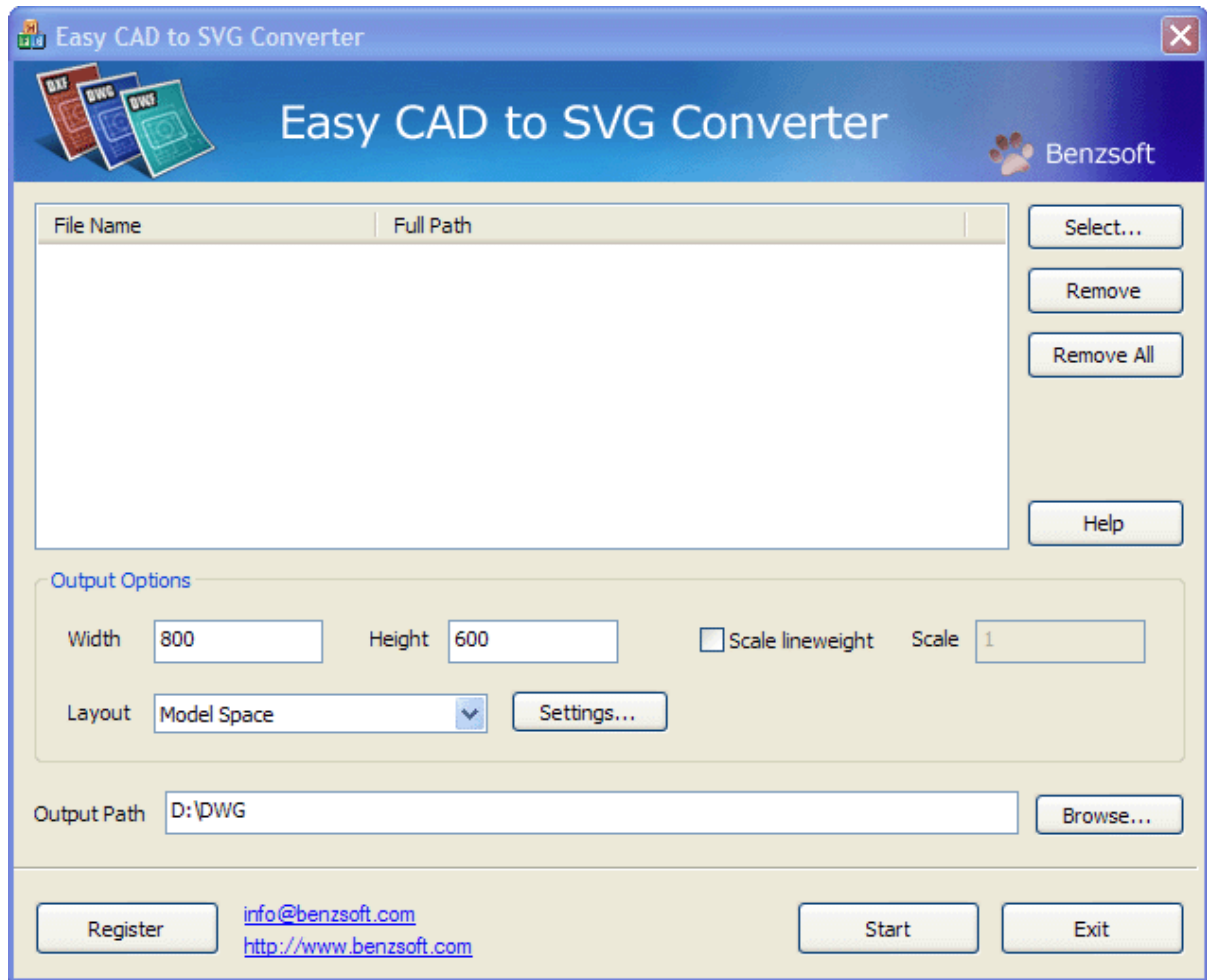
Once you click this button, you will be able to select one or more files to be converted. When selecting multiple files, you can use Shift key on your keyboard to mark the first file and the last file and therefore add a row of files to the Conversion List. You can also use Shift key on your keyboard to select multiple drawing files in any combination.



2.3 Remove Drawings from Conversion List

Remove Drawings from Conversion List

You can add drawing files to the Conversion List, and you can also remove one or more drawing files from the List by clicking *Remove* button to remove a selected CAD drawing or you may click *Remove All* button to remove all CAD drawings in the List.



2.4 Set up Conversion Options

Set up Conversion Options

Several options are available to customize the conversion process.

Width: You can specify the width of the output SVG file.

Height: You can specify the height of the output SVG file.

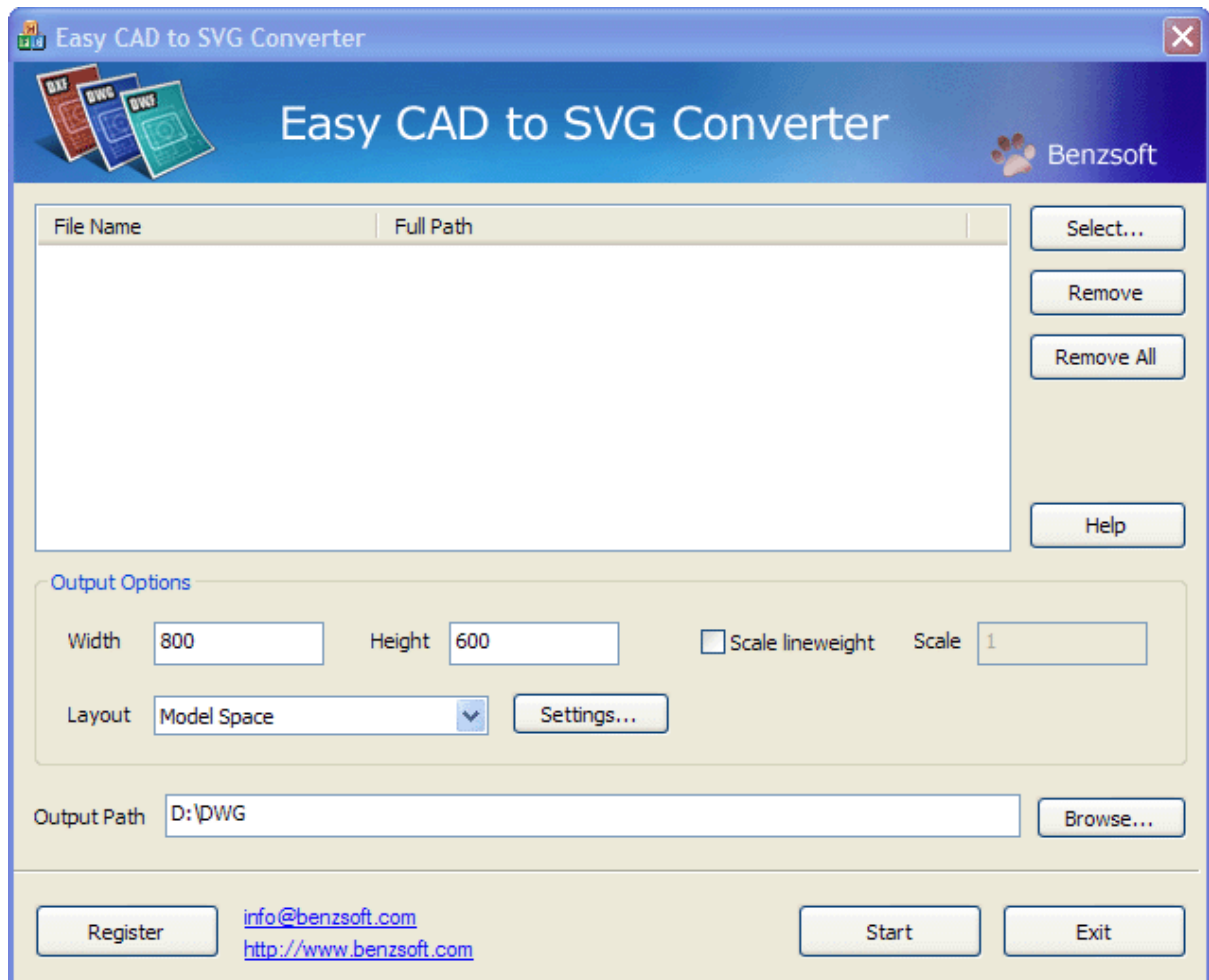
Layout: You can choose *Paper Space*, *Model Space*, *Active Layout*, or even *All Layout* to as the final layout to be used in the conversion.

AutoCAD uses two distinctly different types of viewports: the viewports you create while in model space using the Vports command, and the viewports you create while in paper space using the Mview command. You use both types of viewports to view your model from different views, but they behave very differently.

In *model space* you must tile the viewports you create. They lie side by side and fill up the entire display area. They are restricted to being rectangular at all times. When in model space you can plot only one viewport at a time—one of the main reasons you need paper space. The viewports you create in a layout don't follow the same rules—they can be many different shapes and sizes. They can lie on top of each other, inside each other, overlap, and so forth. You can copy, move, stretch, and erase paper space viewports.

Paper space viewports are actually considered objects. There is a method and madness to properly setting up your paper space viewports, which we'll postpone until my next column.

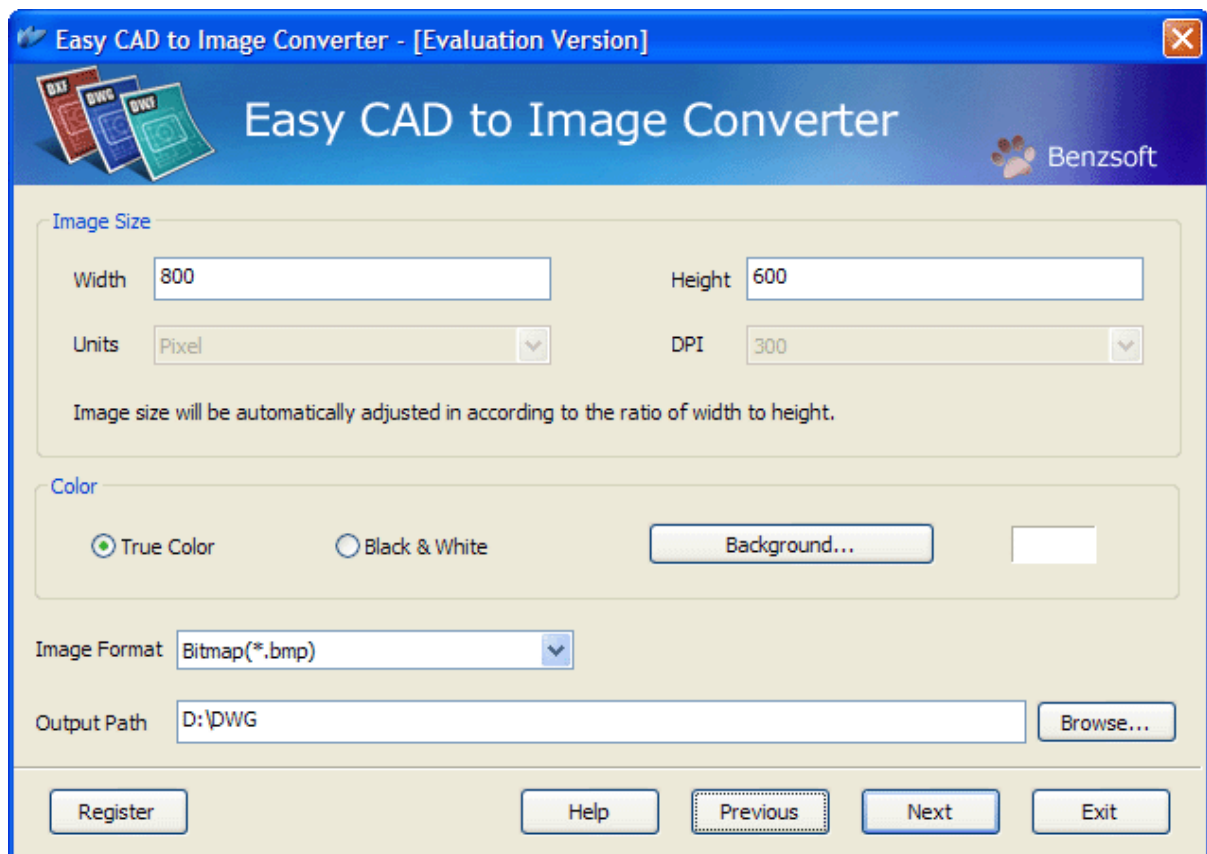
Settings of SHX font, Xref block: Some CAD drawings employ SHX fonts and XRef blocks, without which the CAD drawings would be otherwise not handled correctly. Issues such as loss of fonts, missing of objects, might occur.



2.5 Specify Output Folder

Select Output Folder

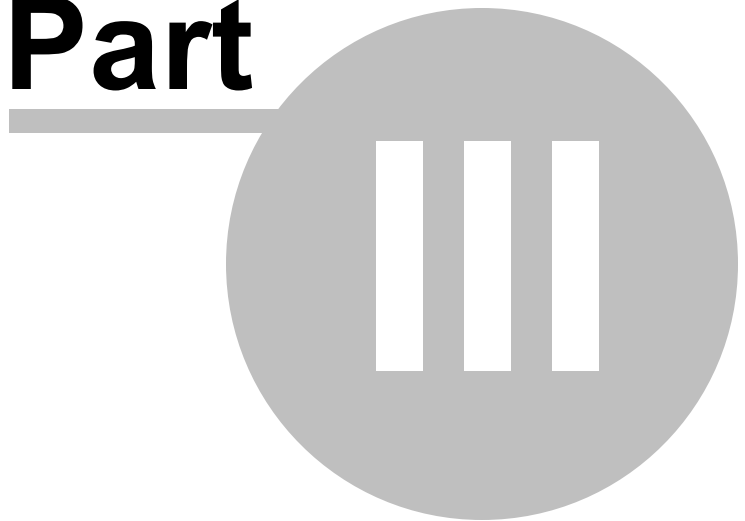
Specify where to save the output drawing files. It can be a folder in your own computer or a shared folder on a remote server. Remote folder should be expressed in its UNC name, such as \\server007\folder123.



Top Level Intro

This page is printed before a new
top-level chapter starts

Part



3 Purchase and Registration

Purchase and Registration

A number of dialog box options are not functional or have limited usefulness in Easy CAD to SVG Converter.

Topics in this section

- [Limitation in Evaluation Copy](#)

Features that have been disabled or partially limited in Easy CAD to SVG Converter.

- [Benefits of Purchase](#)

Benefits you will get after you purchase Easy CAD to SVG Converter.

- [How to Purchase](#)

The ways to purchase Easy CAD to SVG Converter online or offline.

- [How to Register](#)

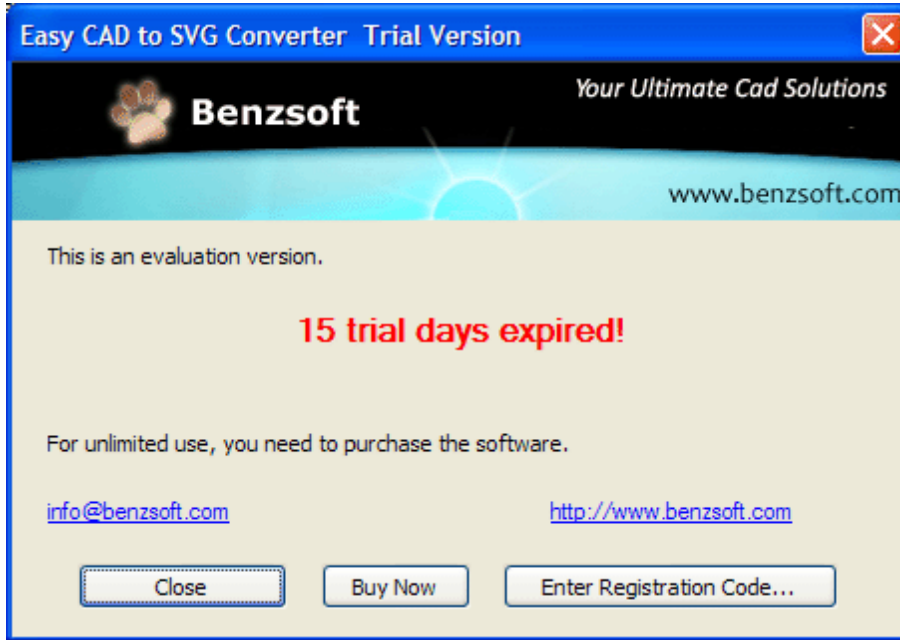
Turn your evaluation copy into a fully-functional copy after you get your registration code.

3.1 Limitation in Evaluation Copy

Limitation in Evaluation Copy

Easy CAD to SVG Converter is shareware, and you can evaluate it for up to as long as you wish. In the evaluation period, you are allowed to convert NO MORE THAN three drawing files in a batch conversion. You get the following pop-up that reminds you to

purchase the full version software.



Registration Reminder Window

The full version of Easy CAD to SVG Converter can be obtained online after you pay the registration fee and get a license from one of our resellers worldwide. For more information on registration, read the [How to Purchase](#) section.

3.2 Benefits of Purchase

Benefits of Purchase

The benefits of purchasing a license and obtaining the full version copy include, but not limited to

- Only a one-time charge for a lifetime license
- 100% Safe and Secure Transaction (128 bit SSL)

- Life-time unlimited software upgrade
- Get unlimited premium technical support by email and by phone
- Batch convert as many drawing files as you want
- No more Registration Reminder window
- Watermark completely removed from the output image files
- Recovery Protection: download full version software at anytime!
- Electronic Delivery (immediate download, instant setup)
- Get 20% off when you purchase another product produced by Benzsoft

3.3 How to Purchase

How to Purchase

To purchase a license or multiple license for Easy CAD to SVG Converter, visit our company website for more information,

<http://www.benzsoft.com>

Pricing Information,

<http://www.benzsoft.com/cad2svgpricing.html>

Quick Buy Link,

<http://www.benzsoft.com/quickbuycad2svg.html>

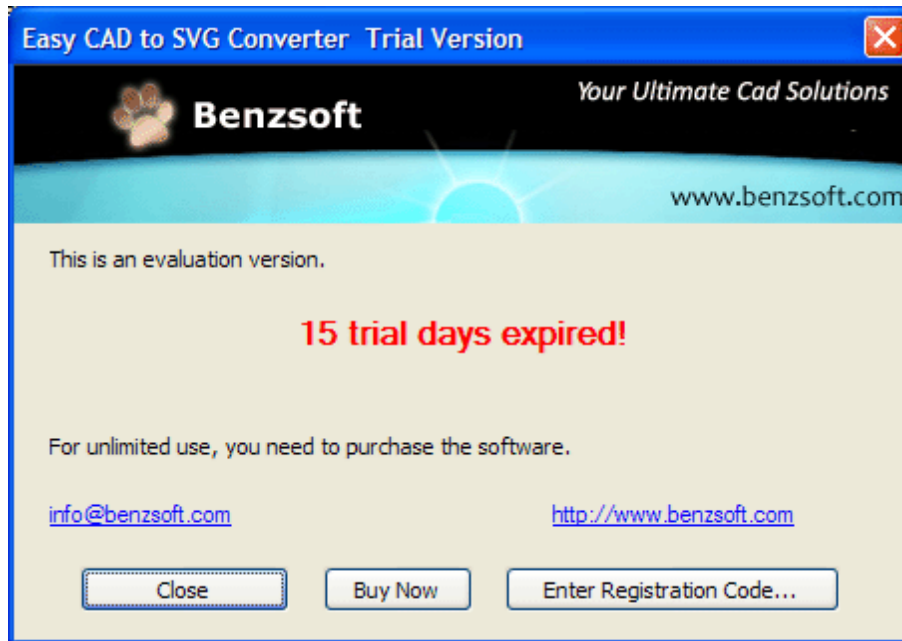
End User License Agreement,

<http://www.benzsoft.com/eula.html>

3.4 How to Register

How to Register

If you have already purchased a license for Easy CAD to SVG Converter, you get your registration code to turn the evaluation copy into a full version copy. To enter your registration code, simply click the *Enter Registration Code...* button when the software prompts you to register,



Alternatively, you can click the *Register* button on the bottom-left corner of the software and enter your registration code.

Top Level Intro

This page is printed before a new
top-level chapter starts

Part



4 Trademarks

Trademarks

Easy CAD to SVG Converter is a registered trademark in the United States and other countries, licensed exclusively through Benzsoft Corporation.

The following are registered trademarks or trademarks of Autodesk, Inc., in the USA and other countries: 3DEC (design/logo), 3December, 3December.com, 3ds Max, ADI, Alias, Alias (swirl design/logo), AliasStudio, Alias|Wavefront (design/logo), ATC, AUGI, AutoCAD, AutoCAD Learning Assistance, AutoCAD LT, AutoCAD Simulator, AutoCAD SQL Extension, AutoCAD SQL Interface, Autodesk, Autodesk Envision, Autodesk Insight, Autodesk Intent, Autodesk Inventor, Autodesk Map, Autodesk MapGuide, Autodesk Streamline, AutoLISP, AutoSnap, AutoSketch, AutoTrack, Backdraft, Built with ObjectARX (logo), Burn, Buzzsaw, CAiCE, Can You Imagine, Character Studio, Cinestream, Civil 3D, Cleaner, Cleaner Central, ClearScale, Colour Warper, Combustion, Communication Specification, Constructware, Content Explorer, Create>what's>Next> (design/logo), Dancing Baby (image), DesignCenter, Design Doctor, Designer's Toolkit, DesignKids, DesignProf, DesignServer, DesignStudio, Design|Studio (design/logo), Design Web Format, Discreet, DWF, DWG, DWG (logo), DWG Extreme, DWG TrueConvert, DWG TrueView, DXF, Ecotect, Exposure, Extending the Design Team, Face Robot, FBX, Filmbox, Fire, Flame, Flint, FMDesktop, Freewheel, Frost, GDX Driver, Gmax, Green Building Studio, Heads-up Design, Heidi, HumanIK, IDEA Server, i-drop, ImageModeler, iMOUT, Incinerator, Inferno, Inventor, Inventor LT, Kaydara, Kaydara (design/logo), Kynapse, Kynogon, LandXplorer, LocationLogic, Lustre, Matchmover, Maya, Mechanical Desktop, Moonbox, MotionBuilder, Movimento, Mudbox, NavisWorks, ObjectARX, ObjectDBX, Open Reality, Opticore, Opticore Opus, PolarSnap, PortfolioWall, Powered with Autodesk Technology, Productstream, ProjectPoint, ProMaterials, RasterDWG, Reactor, RealDWG, Real-time Roto, REALVIZ, Recognize, Render Queue, Retimer, Reveal, Revit, Showcase, ShowMotion, SketchBook, Smoke, Softimage, Softimage|XSI (design/logo), SteeringWheels, Stitcher, Stone, StudioTools, Topobase, Toxik, TrustedDWG, ViewCube, Visual, Visual Construction, Visual Drainage, Visual Landscape, Visual Survey, Visual Toolbox, Visual LISP, Voice Reality, Volo, Vtour, Wire, Wiretap, WiretapCentral, XSI, and XSI (design/logo).

All other brand names, product names or trademarks belong to their respective holders.

Endnotes 2... (after index)

Back Cover