

User Guide

for

Easy CAD Converter

© 2010 Benzsoft Corporation

Product Brief

A brief introduction to Easy CAD Converter

by Benzsoft Corporation

Benzsoft is proud to announce the release of the Easy CAD Converter software, with which, you can convert your CAD drawings from DWG to DXF, from DWG to DWF, from DXF to DWG, from DXF to DWF, from DWF to DXF, from DWF to DWG without the need for AutoCAD-based products. Easy CAD Converter is more than a file format converter, and you can even upgrade or downgrade your DWG, DXF, DWF drawing files to a newer or earlier version to answer your specific needs, such as for better compatibility.

Easy CAD Converter

© 2010 Benzsoft Corporation

All rights reserved. No parts of this work may be reproduced in any form or by any means - graphic, electronic, or mechanical, including photocopying, recording, taping, or information storage and retrieval systems - without the written permission of the publisher.

Products that are referred to in this document may be either trademarks and/or registered trademarks of the respective owners. The publisher and the author make no claim to these trademarks.

While every precaution has been taken in the preparation of this document, the publisher and the author assume no responsibility for errors or omissions, or for damages resulting from the use of information contained in this document or from the use of programs and source code that may accompany it. In no event shall the publisher and the author be liable for any loss of profit or any other commercial damage caused or alleged to have been caused directly or indirectly by this document.

Printed: December 2009 in (wherever you are located)

Publisher

Benzsoft Corp.

Managing Editor

Frank Benz

Technical Editors

John Bagley

Alicia Hoobing

Cover Designer

Larry Hans

Team Coordinator

Becky Hoth

Production

New Avant Publishing House

Special thanks to:

All the people who contributed to this document, to mum and dad and grandpa, to my sisters and brothers and mothers in law, to our secretary Kathrin, to the graphic artist who created this great product logo on the cover page (sorry, don't remember your name at the moment but you did a great work), to the pizza service down the street (your daily Capricciosas saved our lives), to the copy shop where this document will be duplicated, and and and...

Table of Contents

Foreword	5
Part I Introduction	7
1 Understand Easy CAD Converter Capabilities.....	7
2 Understand the Interface.....	8
3 Check System Requirement.....	10
4 Understand the Concept of Shareware.....	11
Part II Work with Conversion	15
1 Choose Conversion Mode.....	16
2 Add Drawings to Conversion List.....	17
3 Remove Drawings from Conversion List.....	17
4 Set up Conversion Options.....	18
5 Specify Output Format.....	19
6 Select Output Version.....	20
7 Specify Output Folder.....	22
8 Load Fonts, Xref Objects.....	22
Part III Purchase and Registration	25
1 Limitation in Evaluation Copy.....	25
2 Benefits of Purchase.....	26
3 How to Purchase.....	27
4 How to Register.....	27
Part IV Trademarks	30
Index	0

Foreword

Easy CAD Converter, it's everyone's converter!

Part



1 Introduction

Introduction to Easy CAD Converter

Benzsoft is proud to announce the release of the Easy CAD Converter software, with which, you can convert your CAD drawings from DWG to DXF, from DWG to DWF, from DXF to DWG, from DXF to DWF, from DWF to DXF, from DWF to DWG without the need for AutoCAD-based products. Easy CAD Converter is more than a file format converter, and you can even upgrade or downgrade your DWG, DXF, DWF drawing files to a newer or earlier version to answer your specific needs, such as for better compatibility.

Topics in this section

- [Understand Easy CAD Converter Capabilities](#)

Easy CAD Converter is a power conversion software for converting any to any format among DXF, DWG, DWF.

- [Understand the Interface](#)

Easy CAD Converter is easy-to-use, and you don't need any special knowledge nor background to start.

- [Check System Requirement](#)

This section informs you the minimum software and hardware requirement to run the software smoothly.

- [Understand the Concept of Shareware](#)

Try-before-you-buy allows you to test-drive Easy CAD Converter in 15 days.

1.1 Understand Easy CAD Converter Capabilities

Understand Easy CAD Converter Capabilities

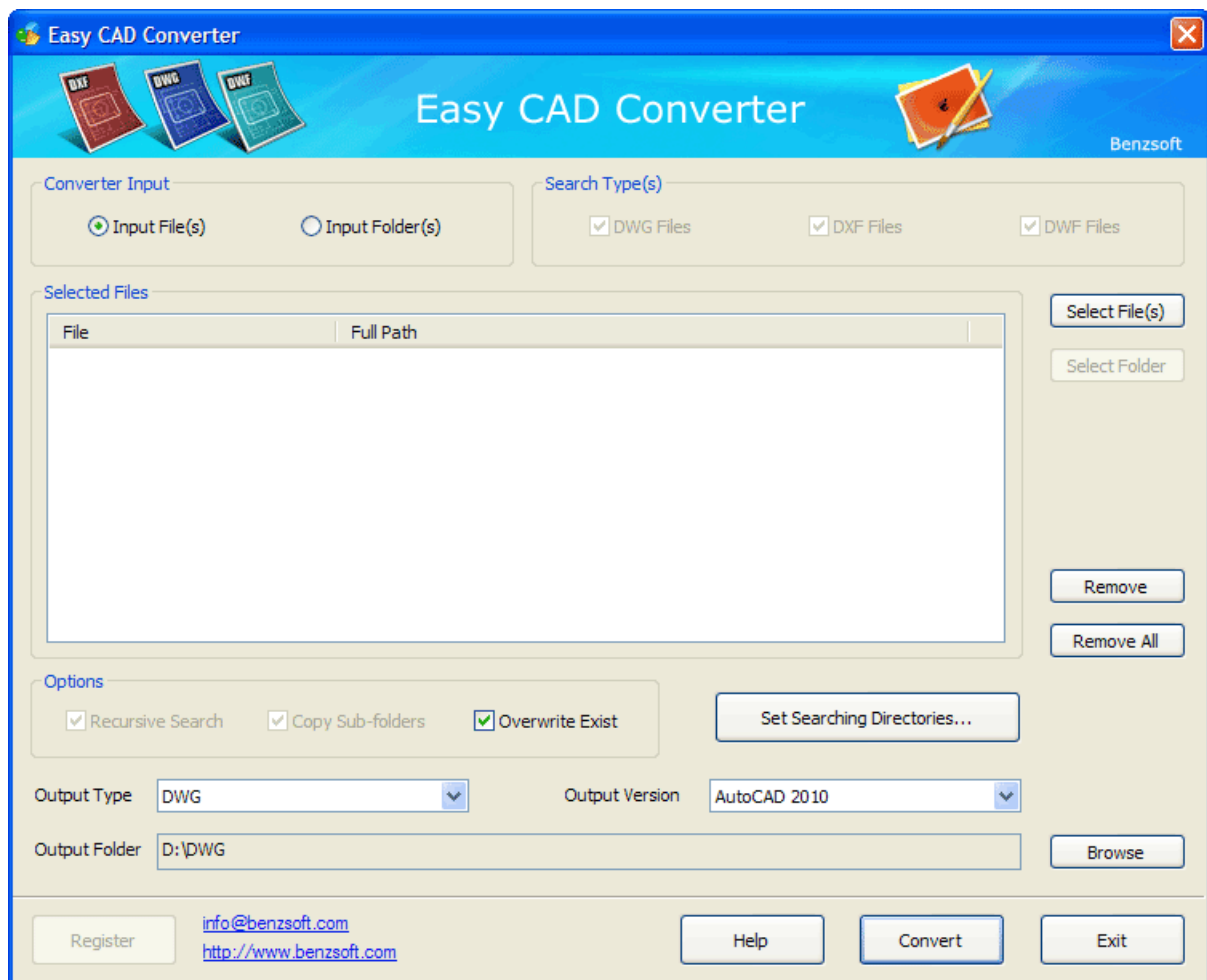
With Easy CAD Converter, you have direct access to DWG, DXF, DWF drawing files created by AutoCAD-based applications for the following purposes:

- Convert any format to the other formats among DXF, DWG, DWF
- Batch convert multiple drawing files from DXF to DWG, DXF to DWF, DXF to DWG, DXF to DWF, DWF to DWG, DWF to DXF
- Automatically search for drawing files in the folder of your choice including subfolders
- An editable file list Collects drawing files from multiple locations
- Convert DWG, DXF, DWF files forward and backward with versions as early as AutoCAD Release 11 and as recent as AutoCAD 2010.

1.2 Understand the Interface

Understand the Interface

Easy CAD Converter is easy-to-use. Your primary interface for controlling the operation of Easy CAD Converter are the buttons, which include the most common operations.



Select File(s)

Add one or more drawing files to the Conversion List. Multiple drawing files can be selected by pressing the Shift key or Alt key on your keyboard. This button will be clickable only when *Converter Input* is set to *Input File(s)*.

Select Folder

Add folder to the Conversion List. The available file formats that can be added are DWG, DXF and DWF. Once a folder is selected, Easy CAD Converter automatically search for DWG, DXF, DWF files in the folder. You can opt to specify which file type(s) should be skipped for the search in *Search Type(s)*.

Remove

Remove the selected drawing file from the Conversion List.

Remove All

Remove all drawing files from the Conversion List.

Browse

Browse for a folder as the output folder where all converted drawings will be output to.

Convert

Once you click this button, Easy CAD Converter will start the process of conversion.

Help

Get this help.

Exit

Close Easy CAD Converter

Register

Register Easy CAD Converter online or purchase a license for Easy CAD Converter and get the registration code to unlock all the blocked features in Easy CAD Converter.

1.3 Check System Requirement

Check System Requirement

Before you install Easy CAD Converter, make sure that your computer meets the minimum hardware and software requirements.

Software Requirements

Operating system 32-bit or 64-bit

Microsoft® Windows® XP Home and Professional

Microsoft Windows Vista® including:

Windows Vista Enterprise

Windows Vista Business

Windows Vista Ultimate

Windows Vista Home

Microsoft Windows 2000®

Microsoft Windows Media Center Edition®

Microsoft Windows Home Server®

Microsoft Windows Server 2003®

Microsoft Windows Server 2008®

Microsoft Windows 7®

Hardware Requirements

Processor 32-bit or 64-bit Intel® Pentium® 4 processor or AMD® Athlon,

Graphics card 1024 x 768 VGA with True Color

Requires a Windows-supported display adapter.

Hard Disk 25 MB

Pointing device Mouse, trackball, or other device

Optional hardware Printer or plotter

Modem or access to an Internet connection

Network interface card

1.4 Understand the Concept of Shareware

Understand the Concept of Shareware

The term shareware refers to proprietary software that is provided to users without payment on a trial basis and is often limited by any combination of functionality, availability or convenience. Shareware is often offered as a download from an Internet website or as a compact disc included with a periodical such as a newspaper or magazine. The aim of shareware is to give buyers the opportunity to use the program and judge its usefulness before purchasing a license for the full version of the software.

Shareware is usually offered as a trial version with certain features only available after the license is purchased, or as a full version, but for a trial period. Once the trial period has passed the program may stop running until a license is purchased. Shareware is

often offered without support, updates, or help menus, which only become available with the purchase of a license. The words "free trial" or "trial version" are indicative of shareware.

The term shareware is used in contrast to retail software, which refers to commercial software available only with the purchase of a license which may not be copied for others, public domain software, which refers to software not copyright protected, and freeware, which refers to copyrighted software for which the author solicits no payment (though he or she may request donations).

Easy CAD Converter is Shareware

Easy CAD Converter is shareware, and you can evaluate it for up to 15 days. When the evaluation is over, you are opt to buy the full version of Easy CAD Converter or remove it from your computer.

The full version of Easy CAD Converter can be obtained online after you pay the registration fee and get a license from one of our resellers worldwide. For more information on registration, read the How to Purchase section.

The benefits of registration and obtaining the full version include, but not limited to,

- Only a one-time charge for a lifetime license
- 100% Safe and Secure Transaction (128 bit SSL)
- Life-time unlimited software upgrade
- Get unlimited premium technical support by email and by phone
- Batch conversion limitation completely removed
- No more Registration Reminder window
- Recovery Protection: download full version software at anytime!
- Electronic Delivery (immediate download, instant setup)
- Get 20% off when you purchase another product produced by Benzsoft

Product Removal

For users who are not satisfied with Easy CAD Converter and wish to uninstall it completely from their computers,

[Windows 2000/XP/2003/MCE]

On the Start menu (Windows), click Settings Control Panel Add or Remove Programs.

Select Easy CAD Converter. Click Change/Remove.

On the Installation wizard Maintenance Mode page, click Uninstall.

On the Uninstall Easy CAD Converter page, click Next.

Click Finish.

[Windows Vista/7/2008]

On the Start menu (Windows), click Settings Control Panel Uninstall a Program.

Select Easy CAD Converter. Click Uninstall/Change.

If the User Account Control dialog box displays, click Continue.

On the Installation wizard Maintenance Mode page, click Uninstall.

On the Uninstall Easy CAD Converter page, click Next.

Click Finish.

Part



2 Work with Conversion

Work with Conversion

Easy CAD Converter helps you have your conversion done quickly and easily. You can convert a single drawing file or multiple drawing files by following the steps given below.

Topics in this section

- [Choose Conversion Mode](#)

You can choose to convert a single drawing or multiple drawings.

- [Add Drawings to Conversion List](#)

Add your drawing to the conversion list or add your drawings from different sources to the conversion list.

- [Remove Drawings from Conversion List](#)

Remove one or more drawings from the Conversion List.

- [Set up Conversion Options](#)

You decide whether to search for drawings in subfolders, whether to keep the folder structure in the output folder as the source folder etc.

- [Specify Output Format](#)

The output format can be one in DWG, DXF and DWF.

- [Select Output Version](#)

Allow you to choose the version of the output drawing files.

- [Specify Output Folder](#)

Specify where to save the output drawing files.

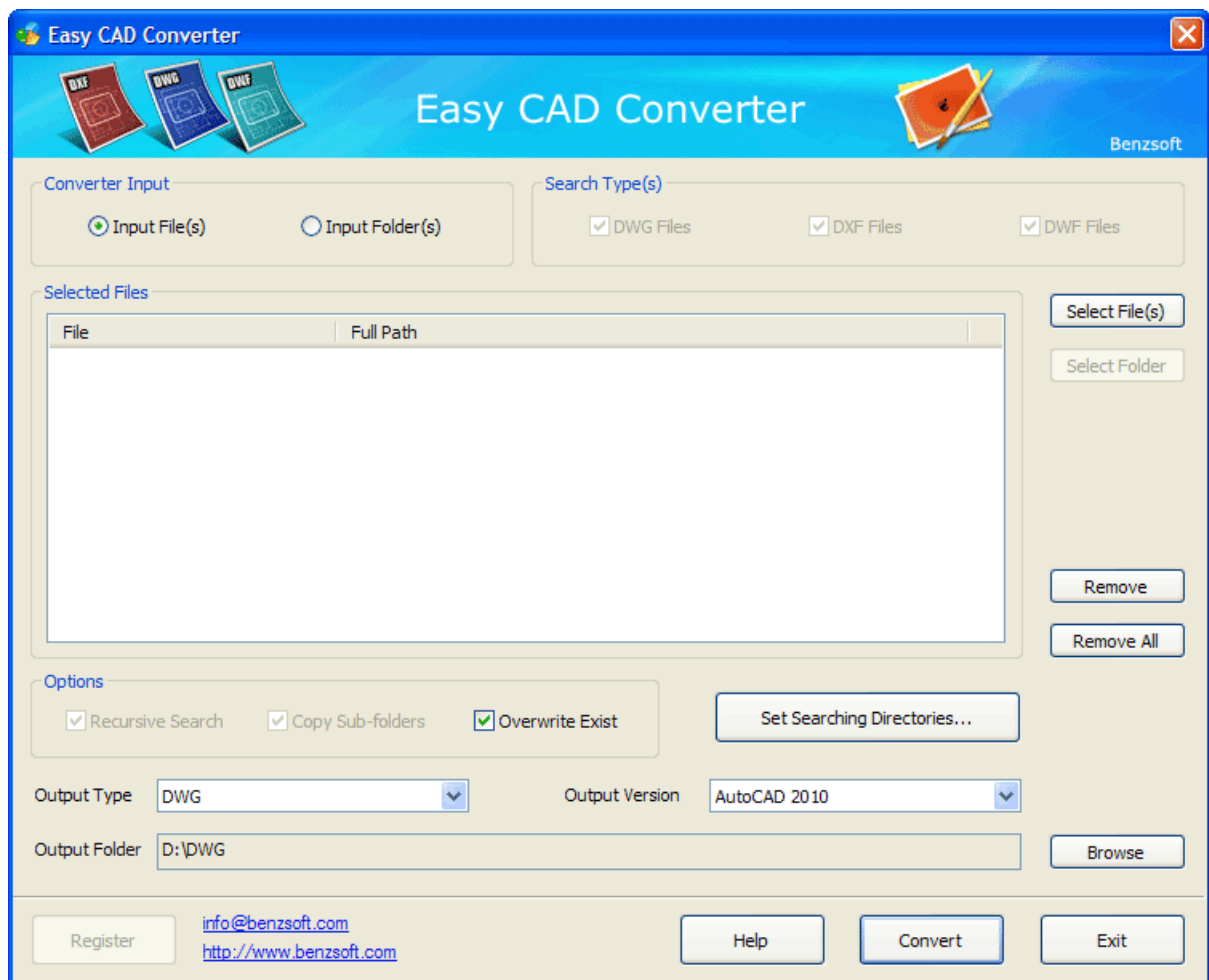
2.1 Choose Conversion Mode

Choose Conversion Mode

In Converter Input, two options are available, which correspond to,

Input File(s): Single file conversion mode

Input Folder(s): Multiple files conversion mode (a.k.a batch conversion mode, bulk conversion mode)

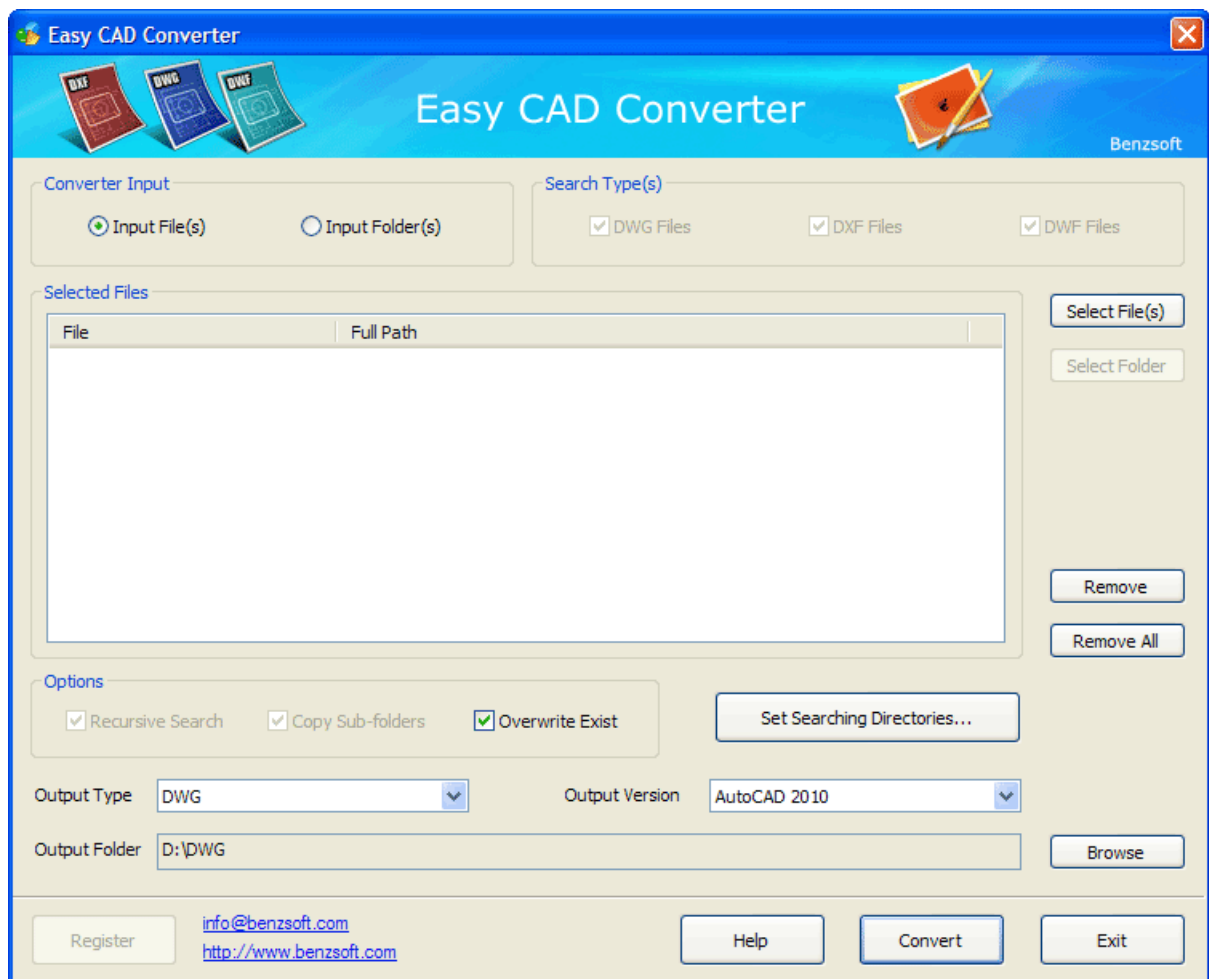


2.2 Add Drawings to Conversion List

Add Drawings to Conversion List

You can add one or more drawing files from any folder by clicking *Select Files(s)* button.

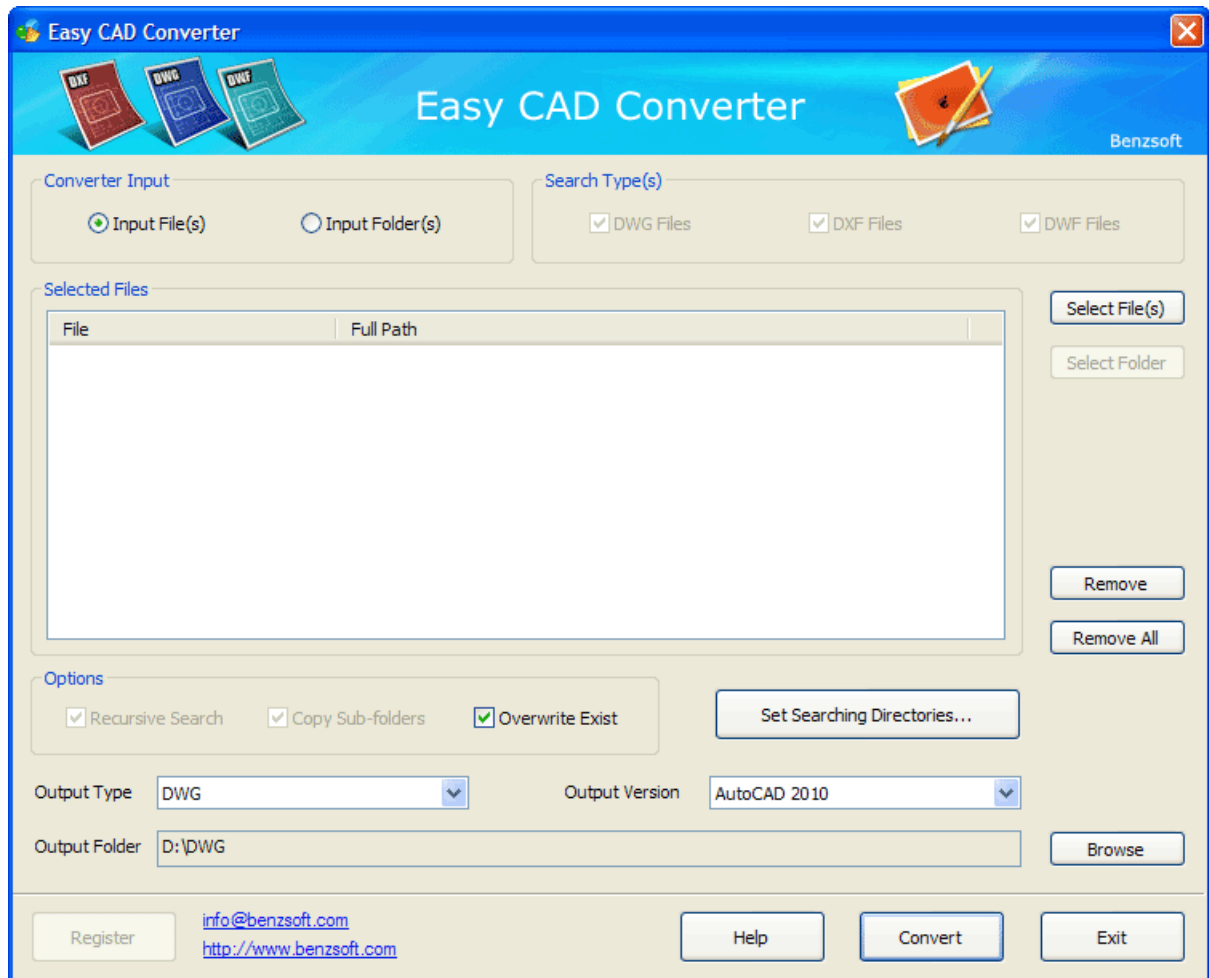
Once you click this button, you will be able to select one or more files to be converted. When selecting multiple files, you can use Shift key on your keyboard to mark the first file and the last file and therefore add a row of files to the Conversion List. You can also use Alt key on your keyboard to select multiple drawing files in any combination.



2.3 Remove Drawings from Conversion List

Remove Drawings from Conversion List

You can add drawing files to the Conversion List, and you can also remove one or more drawing files from the List by clicking *Select Folder* button.



2.4 Set up Conversion Options

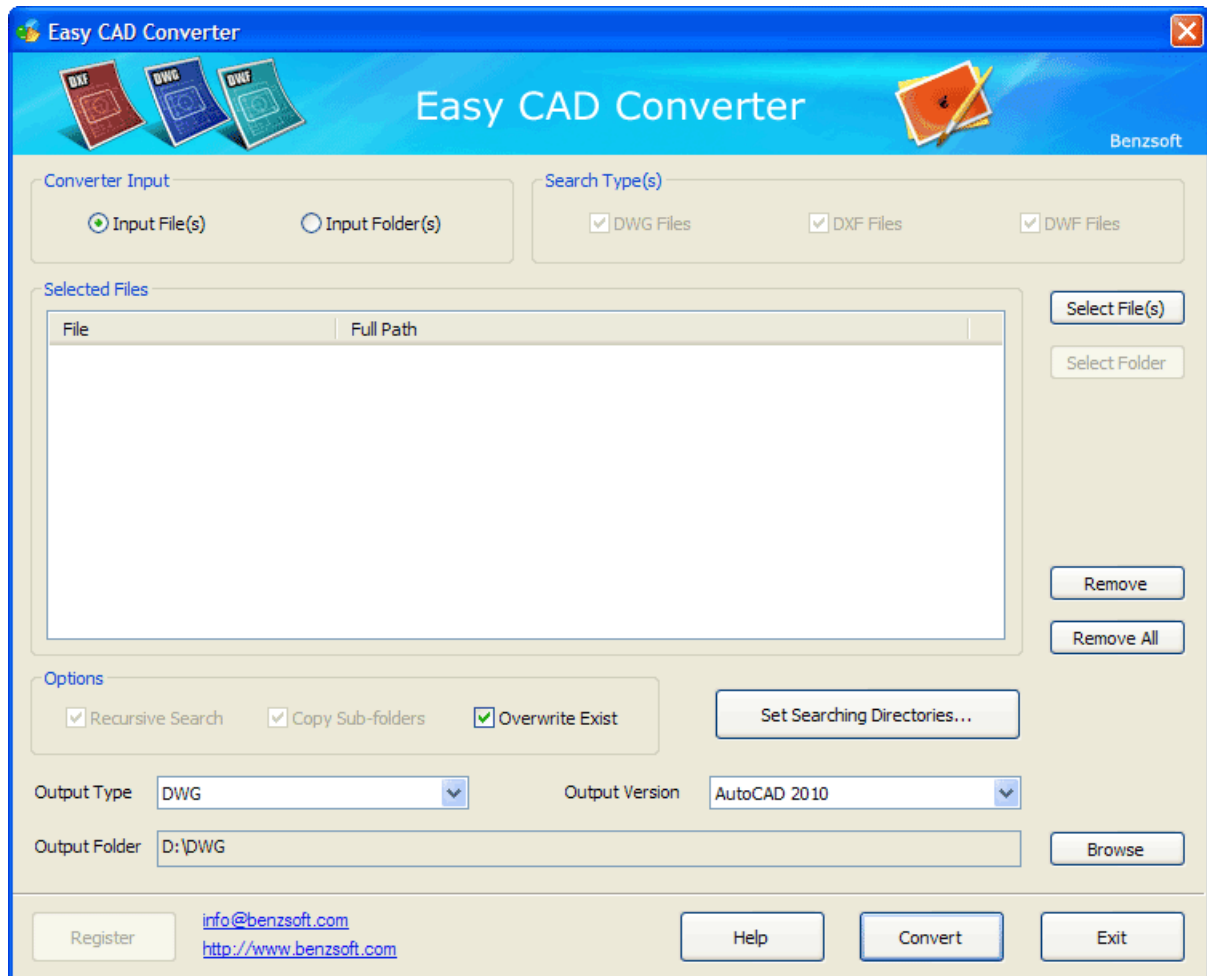
Set up Conversion Options

Three options are available to customize the conversion process.

Recursive Search: When you select a folder and add it to the Conversion List, all drawing files in this folder including files in its subfolders will be located and added to the Conversion List for conversion.

Copy Sub-folders: When this option is checked, the folder structure of the source folder will be kept and duplicated into the target folder.

Overwrite Exist: Existing drawing files in the target folder will be overwritten when this option is checked.



2.5 Specify Output Format

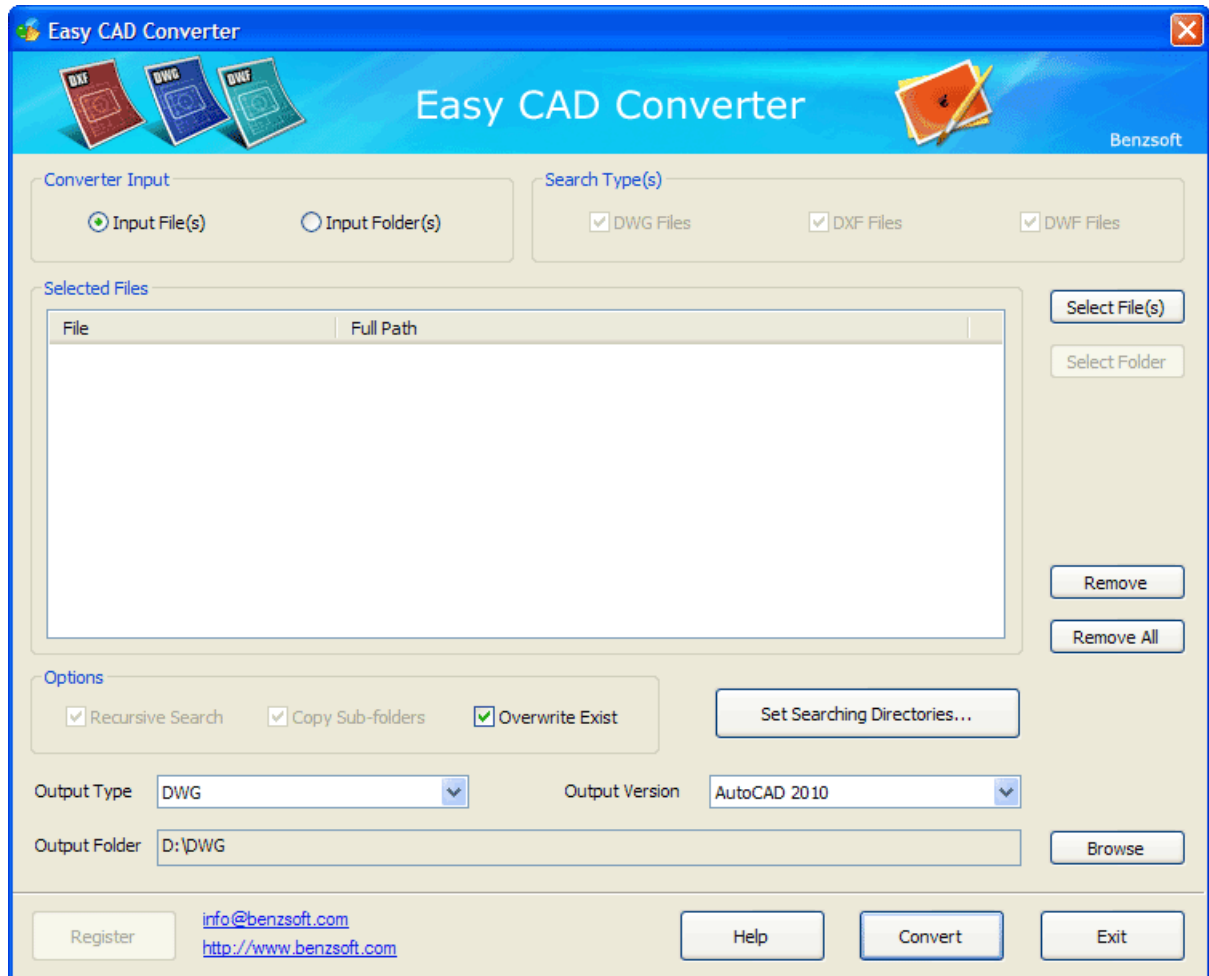
Specify Output Format

Once you have completed adding file(s) to the Conversion List and set up the

conversion options, you should specify the output format, i.e. the file format that all the drawing files will be converted to. This format is called *Output Type*, and it can be the following

- DWG
- ASCII DXF
- Binary DXF
- ASCII DWF
- Binary DWF
- Compressed DWF (binary encoding)

After you choose an *Output Type* from the drop list, you should [select the output version](#) for this output format.



2.6 Select Output Version

Select Output Version

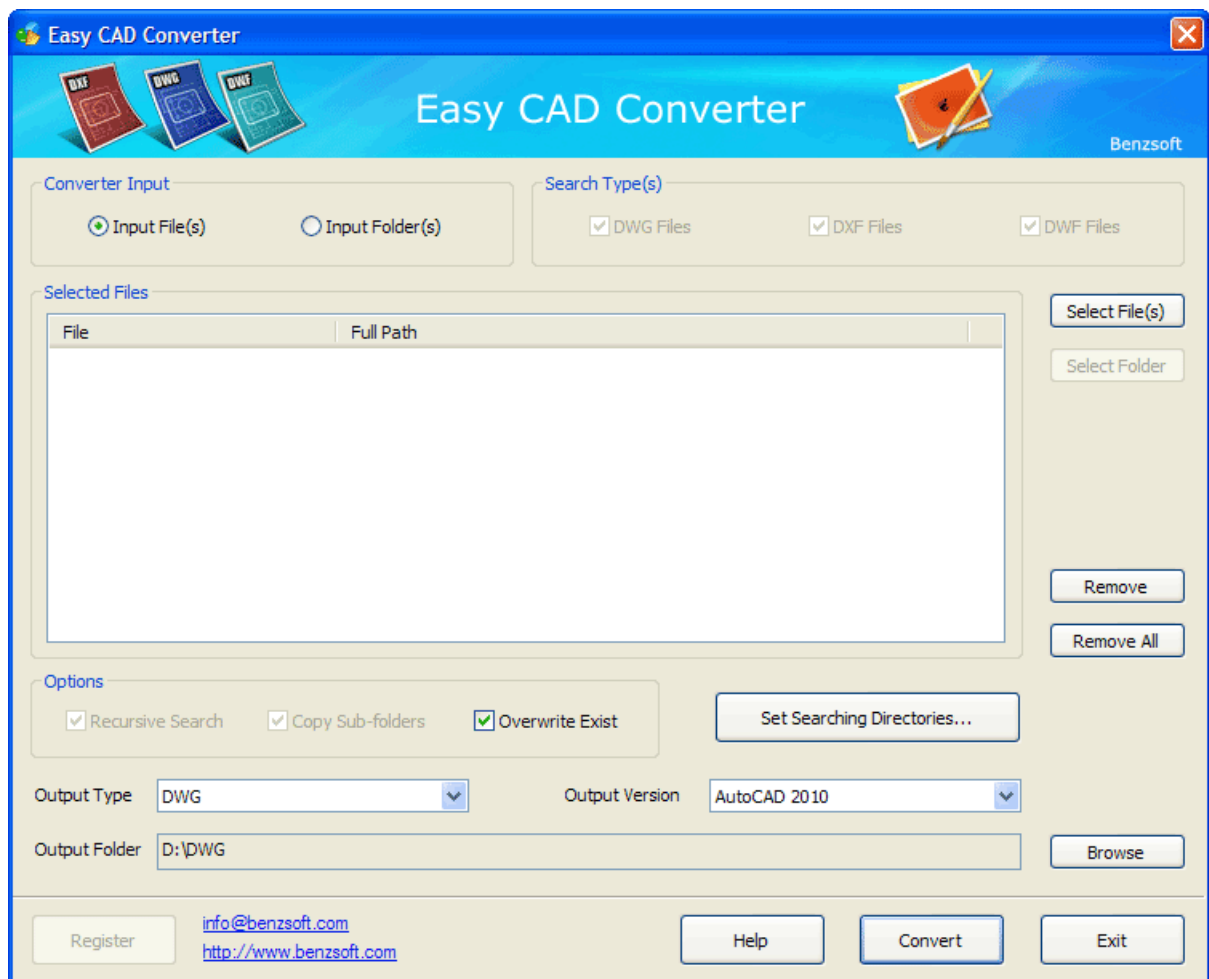
Select the output version for the output drawing files once you have specify the output format.

For DWG files, you can choose a version as early as AutoCAD R11 and as recent as AutoCAD 2010.

For DXF files, you can choose a version as early as AutoCAD R9 and as recent as AutoCAD 2010.

For non-compressed DWF files, you can choose version 6.0, 5.5, or 4.2.

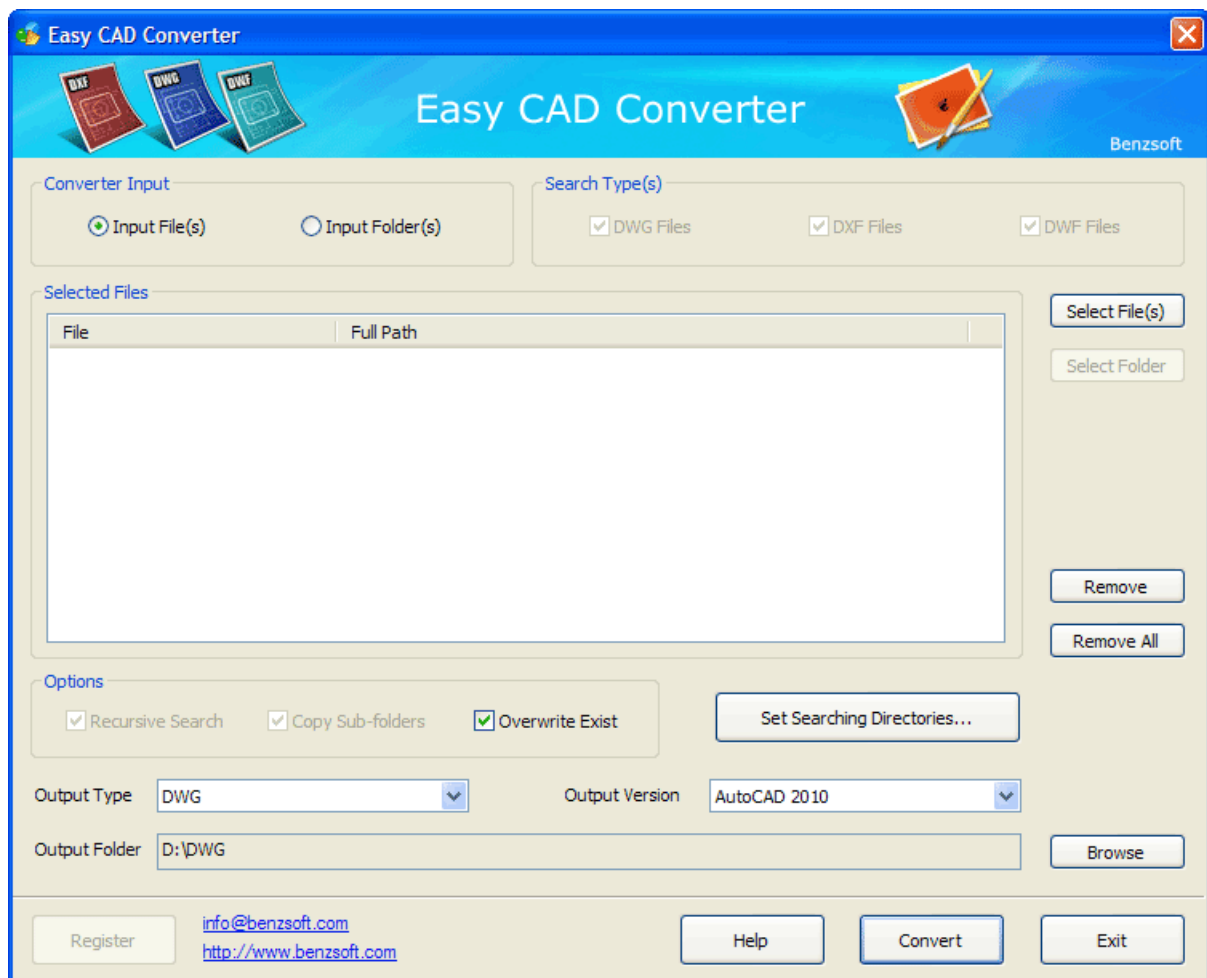
For compressed DWF files, you can choose version 5.5 or 4.2.



2.7 Specify Output Folder

Specify Output Folder

Specify where to save the output drawing files. It can be a folder in your own computer or a shared folder on a remote server. Remote folder should be enter in its UNC name, such as \\server007\folder123.

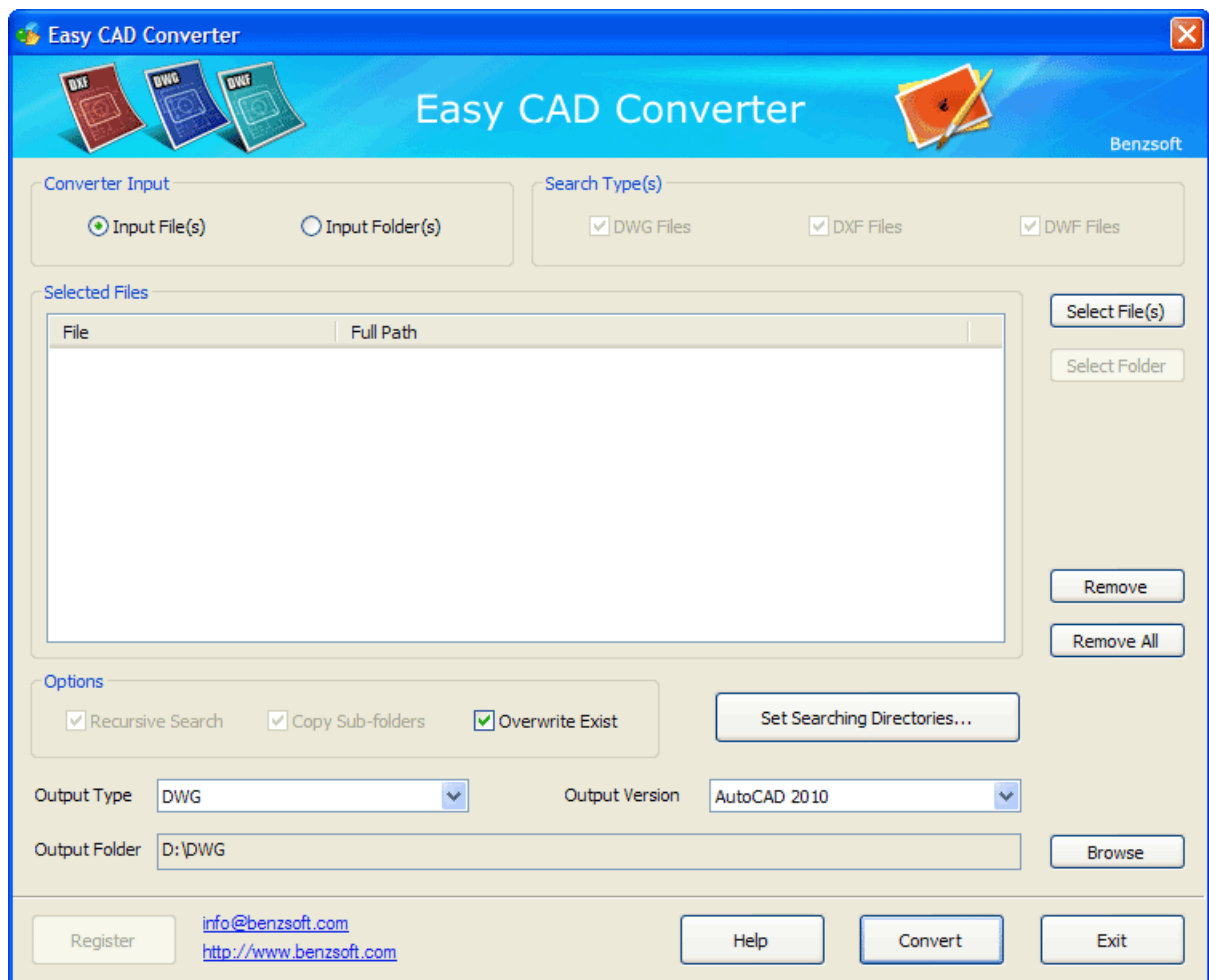


2.8 Load Fonts, Xref Objects

Load SHX Fonts, Xref Objects

In an effort to achieve the conversion result, you might need to load SHX fonts, images, and Xref objects by specifying the search path; otherwise the font might not be correct in the output files, images might be corrupted, and Xref objects might be missing.

Click the *Set Searching Directories...* button, and you will be able to specify the path(s) to allow the converter to load SHX fonts, images, and Xref objects.



Part



3 Purchase and Registration

Purchase and Registration

A number of dialog box options are not functional or have limited usefulness in Easy CAD Converter.

Topics in this section

- [Limitation in Evaluation Copy](#)

Features that have been disabled or partially limited in Easy CAD Converter.

- [Benefits of Purchase](#)

Benefits you will get after you purchase Easy CAD Converter.

- [How to Purchase](#)

The ways to purchase Easy CAD Converter online or offline.

- [How to Register](#)

Turn your evaluation copy into a fully-functional copy after you get your registration code.

3.1 Limitation in Evaluation Copy

Limitation in Evaluation Copy

Easy CAD Converter is shareware, and you can evaluate it for up to 15 days. In the evaluation period, you are allowed to convert NO MORE THAN three drawing files in a batch conversion. You get the following pop-up that reminds you to purchase the full

version software.



Registration Reminder Window

The full version of Easy CAD Converter can be obtained online after you pay the registration fee and get a license from one of our resellers worldwide. For more information on registration, read the [How to Purchase](#) section.

3.2 Benefits of Purchase

Benefits of Purchase

The benefits of purchasing a license and obtaining the full version copy include, but not limited to

- Only a one-time charge for a lifetime license

- 100% Safe and Secure Transaction (128 bit SSL)
- Life-time unlimited software upgrade
- Get unlimited premium technical support by email and by phone
- Batch convert as many drawing files as you want
- No more Registration Reminder window
- Recovery Protection: download full version software at anytime!
- Electronic Delivery (immediate download, instant setup)
- Get 20% off when you purchase another product produced by Benzsoft

3.3 How to Purchase

How to Purchase

To purchase a license or multiple license for Easy CAD Converter, visit our company website for more information,

<http://www.benzsoft.com>

Pricing Information,

<http://www.benzsoft.com/converterpricing.html>

Quick Buy Link,

<http://www.benzsoft.com/quickbuyconverter.html>

End User License Agreement,

<http://www.benzsoft.com/eula.html>

3.4 How to Register

How to Register

If you have already purchased a license for Easy CAD Converter, you get your registration code to turn the evaluation copy into a full version copy. To enter your registration code, simply click the *Enter Registration Code* button when the software prompts you to register,



Alternatively, you can click the *Register* button on the bottom-left corner of the software and enter your registration code.

Part



4 Trademarks

Trademarks

Easy CAD Converter is a registered trademark in the United States and other countries, licensed exclusively through Benzsoft Corporation.

The following are registered trademarks or trademarks of Autodesk, Inc., in the USA and other countries: 3DEC (design/logo), 3December, 3December.com, 3ds Max, ADI, Alias, Alias (swirl design/logo), AliasStudio, Alias|Wavefront (design/logo), ATC, AUGI, AutoCAD, AutoCAD Learning Assistance, AutoCAD LT, AutoCAD Simulator, AutoCAD SQL Extension, AutoCAD SQL Interface, Autodesk, Autodesk Envision, Autodesk Insight, Autodesk Intent, Autodesk Inventor, Autodesk Map, Autodesk MapGuide, Autodesk Streamline, AutoLISP, AutoSnap, AutoSketch, AutoTrack, Backdraft, Built with ObjectARX (logo), Burn, Buzzsaw, CAiCE, Can You Imagine, Character Studio, Cinestream, Civil 3D, Cleaner, Cleaner Central, ClearScale, Colour Warper, Combustion, Communication Specification, Constructware, Content Explorer, Create>what's>Next> (design/logo), Dancing Baby (image), DesignCenter, Design Doctor, Designer's Toolkit, DesignKids, DesignProf, DesignServer, DesignStudio, Design|Studio (design/logo), Design Web Format, Discreet, DWF, DWG, DWG (logo), DWG Extreme, DWG TrueConvert, DWG TrueView, DXF, Ecotect, Exposure, Extending the Design Team, Face Robot, FBX, Filmbox, Fire, Flame, Flint, FMDesktop, Freewheel, Frost, GDX Driver, Gmax, Green Building Studio, Heads-up Design, Heidi, HumanIK, IDEA Server, i-drop, ImageModeler, iMOUT, Incinerator, Inferno, Inventor, Inventor LT, Kaydara, Kaydara (design/logo), Kynapse, Kynogon, LandXplorer, LocationLogic, Lustre, Matchmover, Maya, Mechanical Desktop, Moonbox, MotionBuilder, Movimento, Mudbox, NavisWorks, ObjectARX, ObjectDBX, Open Reality, Opticore, Opticore Opus, PolarSnap, PortfolioWall, Powered with Autodesk Technology, Productstream, ProjectPoint, ProMaterials, RasterDWG, Reactor, RealDWG, Real-time Roto, REALVIZ, Recognize, Render Queue, Retimer, Reveal, Revit, Showcase, ShowMotion, SketchBook, Smoke, Softimage, Softimage|XSI (design/logo), SteeringWheels, Stitcher, Stone, StudioTools, Topobase, Toxik, TrustedDWG, ViewCube, Visual, Visual Construction, Visual Drainage, Visual Landscape, Visual Survey, Visual Toolbox, Visual LISP, Voice Reality, Volo, Vtour, Wire, Wiretap, WiretapCentral, XSI, and XSI (design/logo).

All other brand names, product names or trademarks belong to their respective holders.

User Guide for Easy CAD Converter Rev 2

End of the User Guide